

# EMP1100C Card Counter

## Data Record Upload Demo manual

### 1、 EMP1100C CARD COUNTER OPERATION

- 1) Set Manual Accumulation Mode
- 2) Save Record. Every time after Counting Card, press multifunction key will save current count record in machine SRAM.
- 3) Note: because data record are saved in machine SRAM, power off will loss data record. So before connecting computer , please not let counter power off by press multifunction key every 30 seconds.

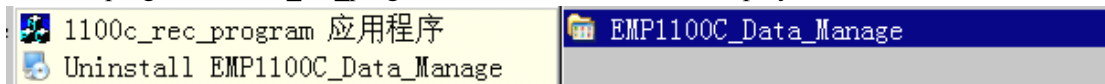
### 2、 DEMO Program OPERATION

#### 2.1 install

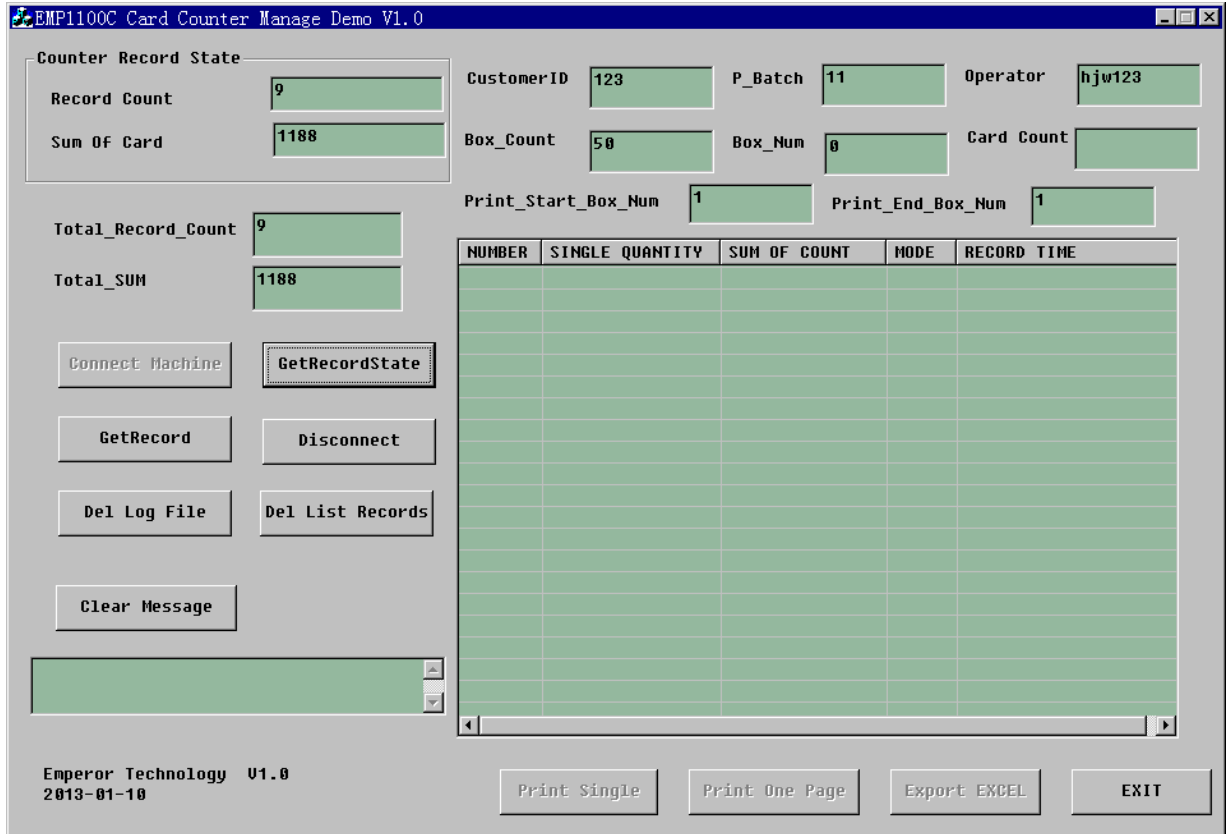
- 1) Run "emp1100c\_install\_en.exe" program to install driver and data manage program.
- 2) Use USB cable connect the counter to computer
- 3) the computer notice find new comport hardware
- 4) install driver, if System not auto install Card counter driver,select manual install driver, driver files are saved in demo program file folder "driver".

#### 2.2 Get record

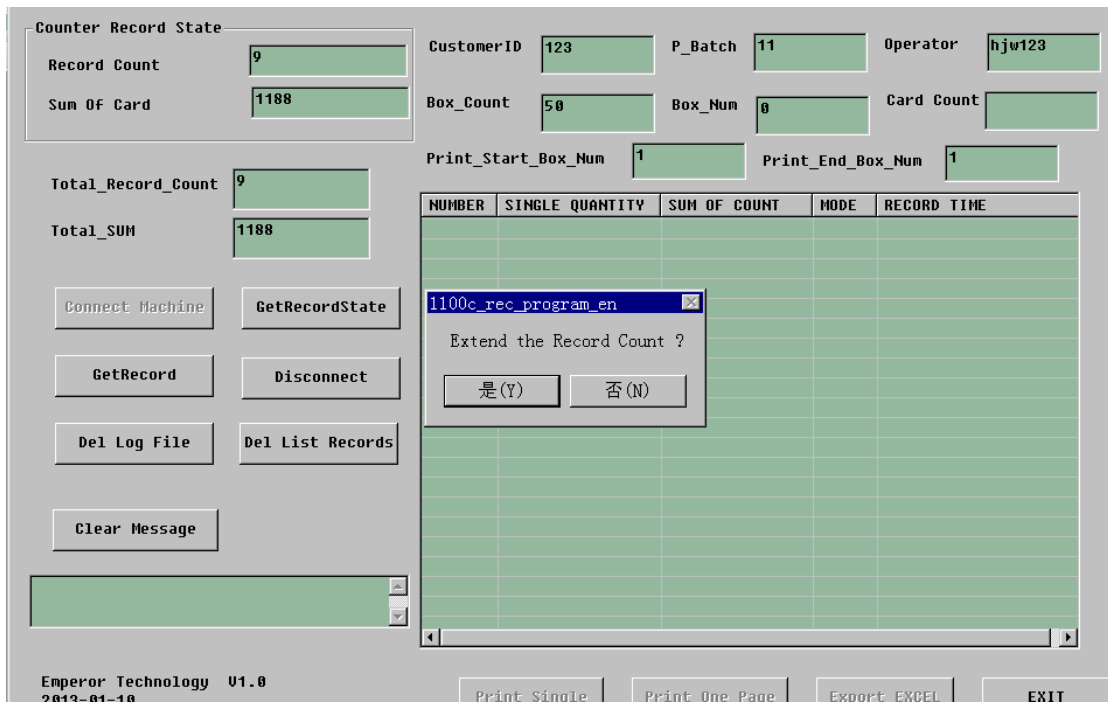
run the program "1100c\_rec\_program.exe" in the start menu ,display below.







3) then click “GetRecord” button



Pop up a dialog ,note "Extend the Record Count",mean this batch records serial number continue with last record serial number.

EMPI100C Card Counter Manage Demo V1.0

Counter Record State

Record Count: 9  
Sum Of Card: 1188

CustomerID: 123 P\_Batch: 11 Operator: hjw123

Box\_Count: 50 Box\_Num: 18 Card Count: 110

Print\_Start\_Box\_Num: 1 Print\_End\_Box\_Num: 1

Total\_Record\_Count: 18  
Total\_SUM: 2376

Connect Machine GetRecordState

GetRecord Disconnect

Del Log File Del List Records

Clear Message

-----16:42:14 Get New Recrd:-----

NUMBER	SINGLE QUANTITY	SUM OF COUNT	MODE	RECORD TIME
18	110	2376	si...	2013-01-08 16:42:14
17	176	2266	si...	2013-01-08 16:42:14
16	176	2090	si...	2013-01-08 16:42:14
15	176	1914	si...	2013-01-08 16:42:14
14	110	1738	si...	2013-01-08 16:42:14
13	110	1628	si...	2013-01-08 16:42:14
12	110	1518	si...	2013-01-08 16:42:14
11	110	1408	si...	2013-01-08 16:42:14
10	110	1298	si...	2013-01-08 16:42:14

Emperor Technology V1.0  
2013-01-10

Print Single Print One Page Export EXCEL EXIT

if click "No",mean this batch records serial number start with zero.

EMPI100C Card Counter Manage Demo V1.0

Counter Record State

Record Count: 9  
Sum Of Card: 1188

CustomerID: 123 P\_Batch: 11 Operator: hjw123

Box\_Count: 50 Box\_Num: 9 Card Count:

Print\_Start\_Box\_Num: 1 Print\_End\_Box\_Num: 1

Total\_Record\_Count: 9  
Total\_SUM: 1188

Connect Machine GetRecordState

GetRecord Disconnect

Del Log File Del List Records

Clear Message

-----16:42:14 Get New Recrd:-----  
-----16:42:54 Get New Recrd:-----

NUMBER	SINGLE QUANTITY	SUM OF COUNT	MODE	RECORD TIME
9	110	1188	si...	2013-01-08 16:42:54
8	176	1078	si...	2013-01-08 16:42:54
7	176	902	si...	2013-01-08 16:42:54
6	176	726	si...	2013-01-08 16:42:54
5	110	550	si...	2013-01-08 16:42:54
4	110	440	si...	2013-01-08 16:42:54
3	110	330	si...	2013-01-08 16:42:54
2	110	220	si...	2013-01-08 16:42:54
1	110	110	si...	2013-01-08 16:42:54

Emperor Technology V1.0  
2013-01-10

Print Single Print One Page Export EXCEL EXIT

4) print record

(1) change print format

CustomerID, P\_Batch(Product batch number), operator name, Card Box\_Count, card box\_serial(equal to record count).

(2) print single record

Click wanted print one record

The screenshot displays the 'EMP1100C Card Counter Manage Demo V1.0' application. The interface is divided into several sections:

- Counter Record State:** Includes input fields for 'Record Count' (9) and 'Sum OF Card' (1188).
- Parameters:** Fields for 'CustomerID' (123), 'P\_Batch' (11), 'Operator' (hju123), 'Box\_Count' (50), 'Box\_Num' (5), and 'Card Count' (110).
- Print Range:** 'Print\_Start\_Box\_Num' (1) and 'Print\_End\_Box\_Num' (5).
- Summary:** 'Total\_Record\_Count' (9) and 'Total\_SUM' (1188).
- Table:** A table with columns: NUMBER, SINGLE QUANTITY, SUM OF COUNT, MODE, and RECORD TIME. The table contains 9 rows, with the 5th row (NUMBER 5) highlighted in blue.
- Buttons:** 'Connect Machine', 'GetRecordState', 'GetRecord', 'Disconnect', 'Del Log File', 'Del List Records', 'Clear Message', 'Print Single', 'Print One Page', 'Export EXCEL', and 'EXIT'.
- Log:** A small log window at the bottom left shows messages: '-----16:42:14 Get New Recrd:-----' and '-----16:42:54 Get New Recrd:-----'.
- Footer:** 'Emperor Technology U1.0 2013-01-10'.

"Print Single" button will be Enable , Click it will print No.5 Record.

Print result show below.

CustomerID:123

ProductBatch:11

BoxSerialNo. :5/50

**110**

Operator:hjw123

PrintDate:08/01/2013

PrintTime:16:42:54

(3) Print one page

Click wanted print one record,"Print One Page"button will be Enable , Click it will print start with No.5 Record,print 5 records .One page contain 6 records at most.

Print result show below.

CustomerID:123  
ProductBatch:11  
BoxSerialNo:1/50

110

Operator:hjw123  
PrintDate:08/01/2013  
PrintTime:16:42:54

CustomerID:123  
ProductBatch:11  
BoxSerialNo:2/50

110

Operator:hjw123  
PrintDate:08/01/2013  
PrintTime:16:42:54

CustomerID:123  
ProductBatch:11  
BoxSerialNo:3/50

110

Operator:hjw123  
PrintDate:08/01/2013  
PrintTime:16:42:54

CustomerID:123  
ProductBatch:11  
BoxSerialNo:4/50

110

Operator:hjw123  
PrintDate:08/01/2013  
PrintTime:16:42:54

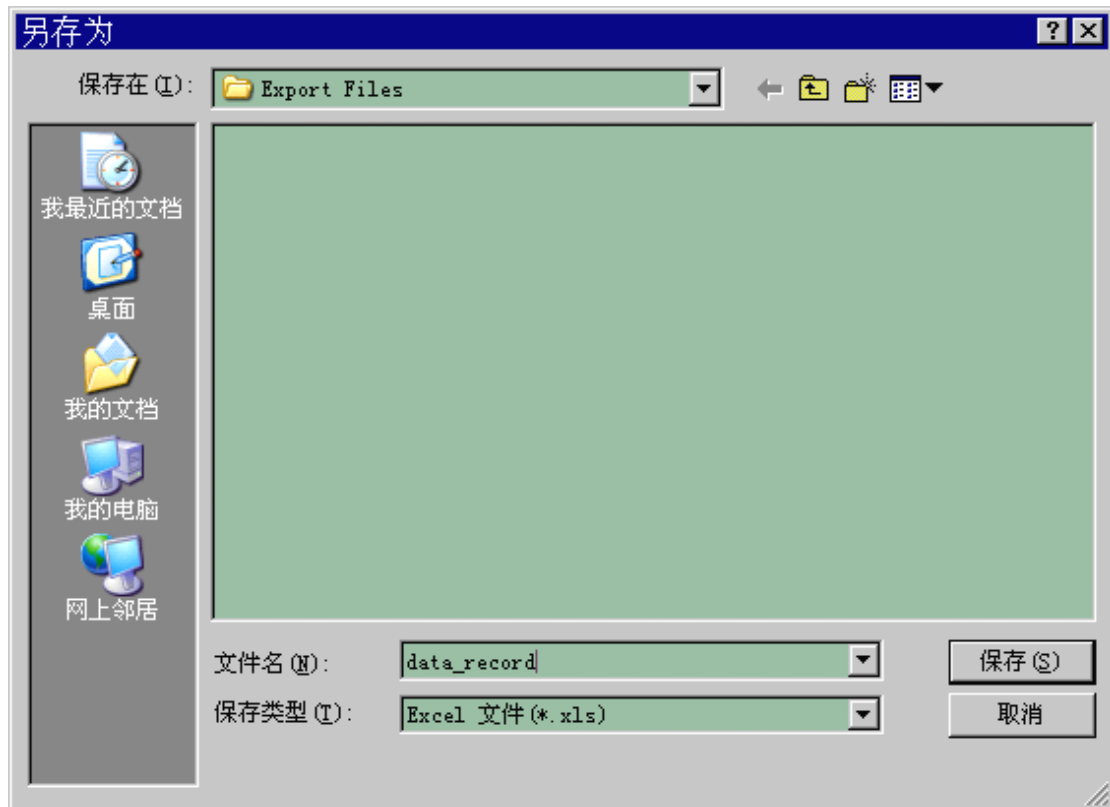
CustomerID:123  
ProductBatch:11  
BoxSerialNo:5/50

110

---

#### 5) Export Excel table

When the list table has data records, the "Export Excel "button will be enable.Click "Export Excel "button will export records in the list table to excel file.



6) then click "Disconnect" button

7) then click "Exit" button

Click "Exit" button will close the demo program ,and user input such as "CustomerID","P\_Batch","Operator","Box\_Count",etc will be saved automatically.

8) log file

In the Program directory,has a "Record "directory,log file will be saved in it.

